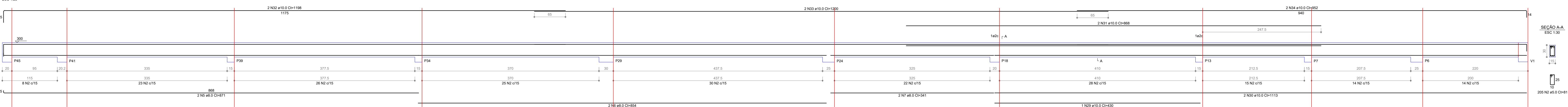
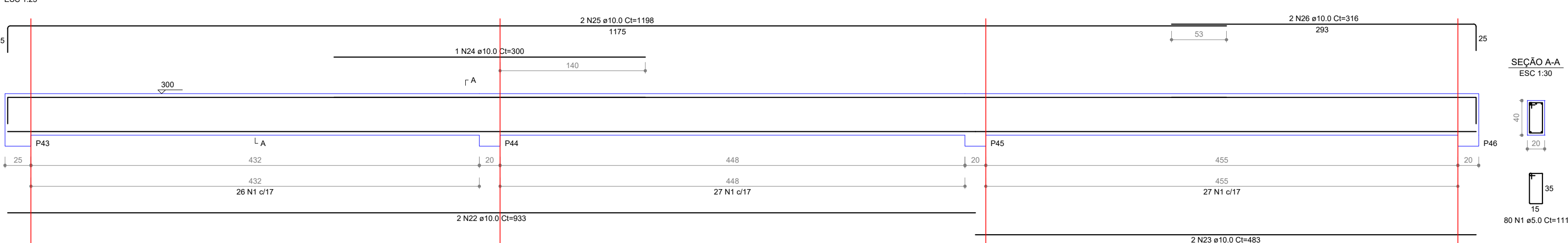


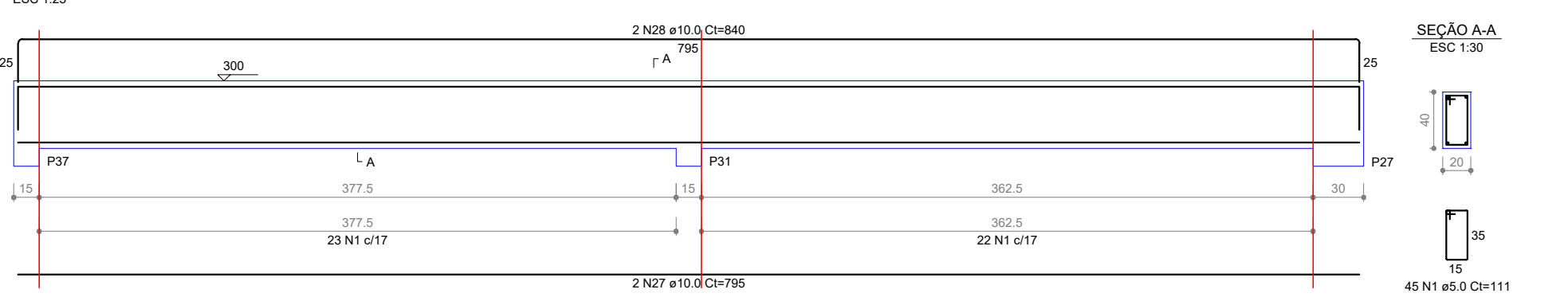
V19 (15 x 30)



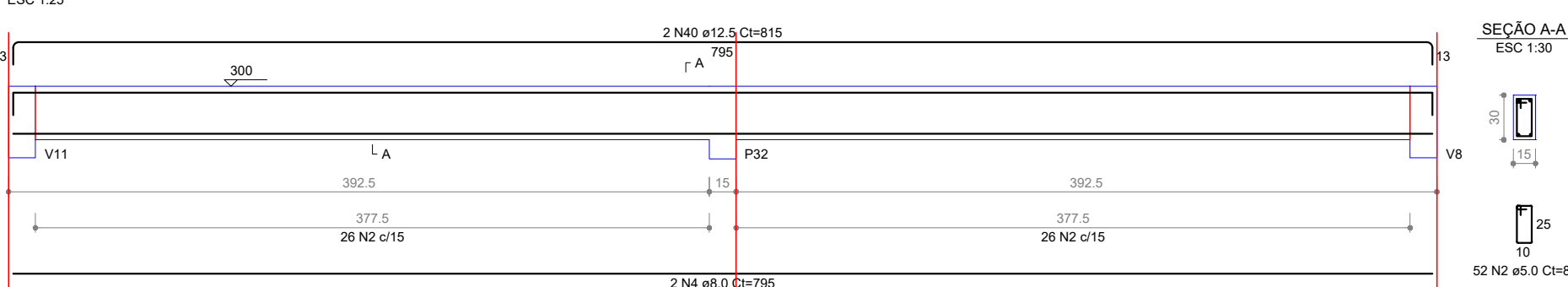
V13 (20 x 40)



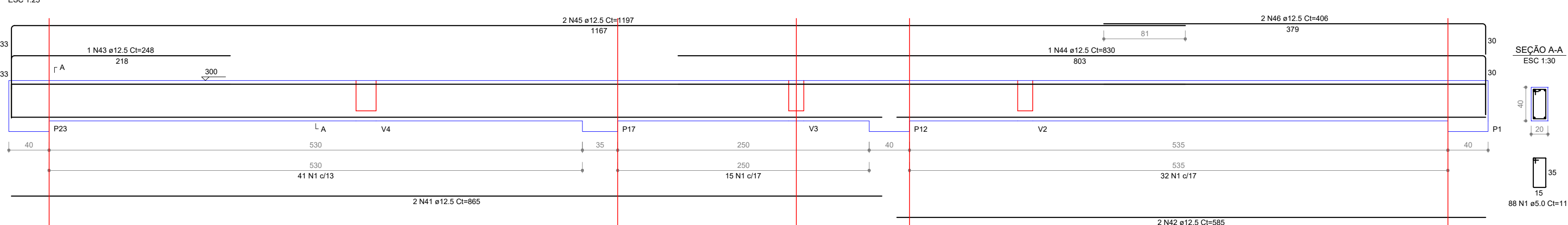
V14 (20 x 40)



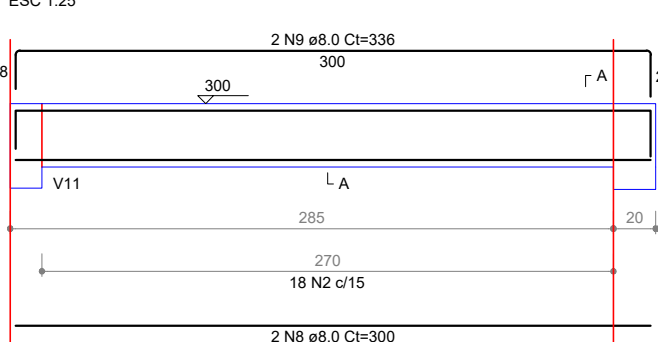
V17 (15 x 30)



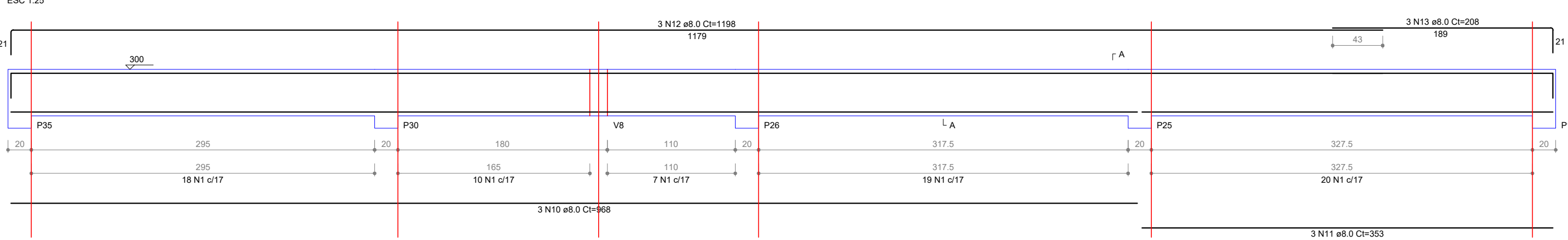
V18 (20 x 40)



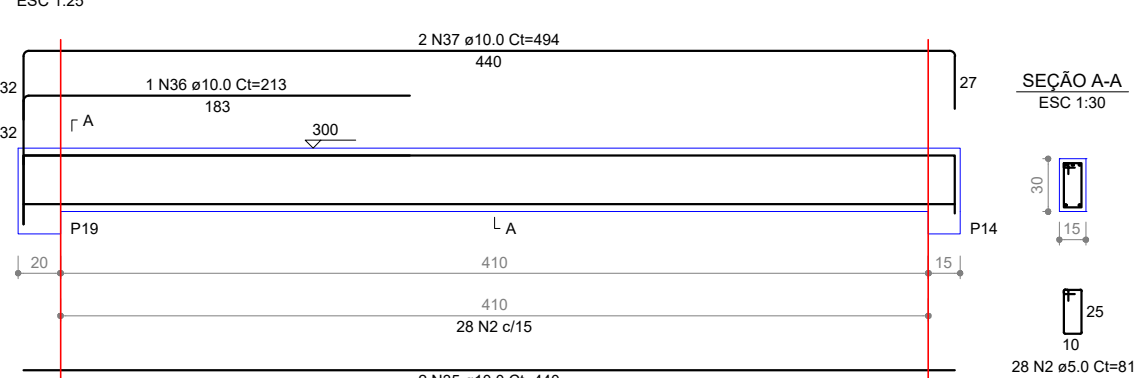
V20 (15 x 30)



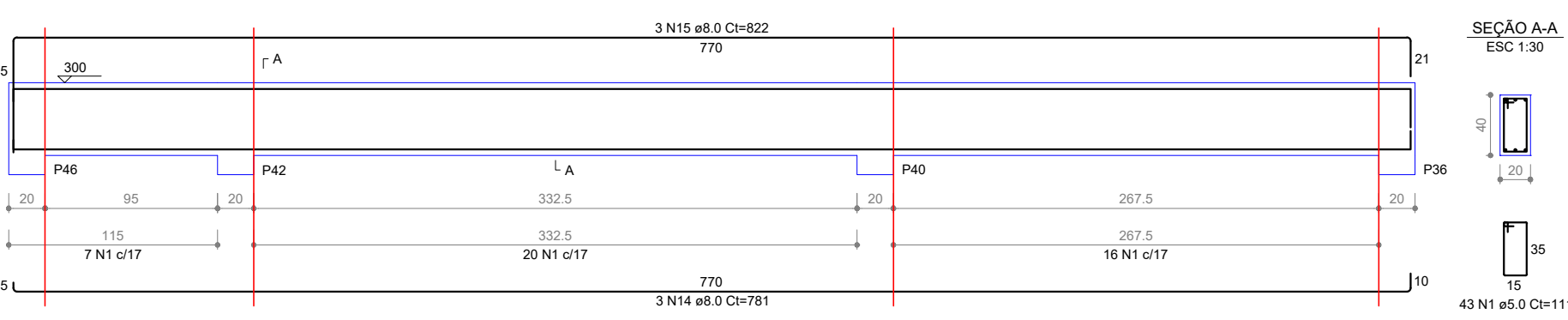
V21 (20 x 40)



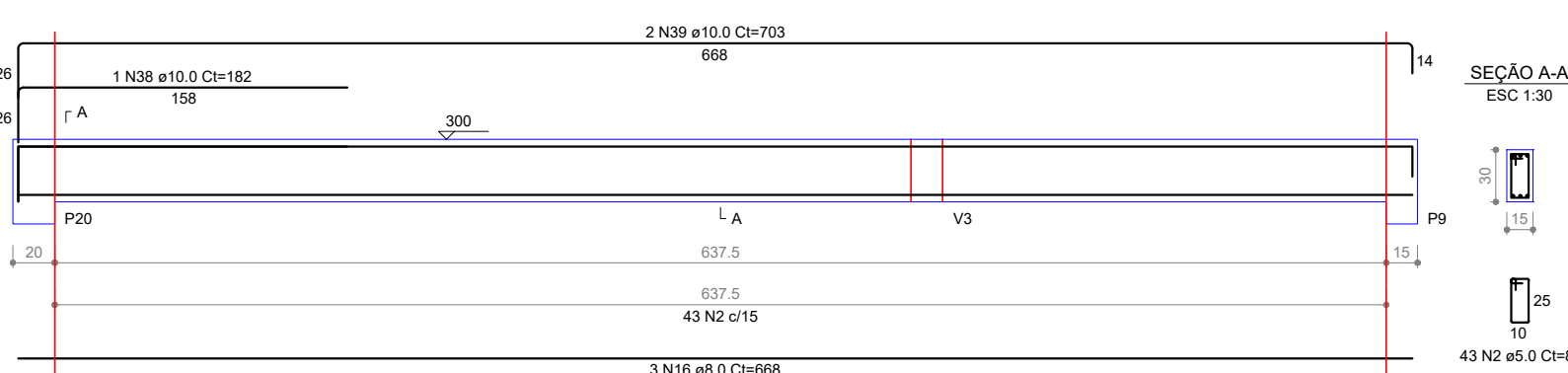
V22 (15 x 30)



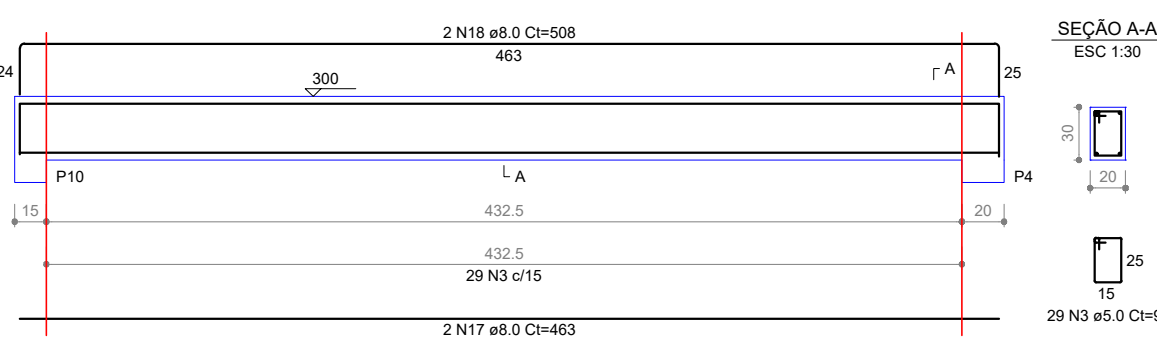
V23 (20 x 40)



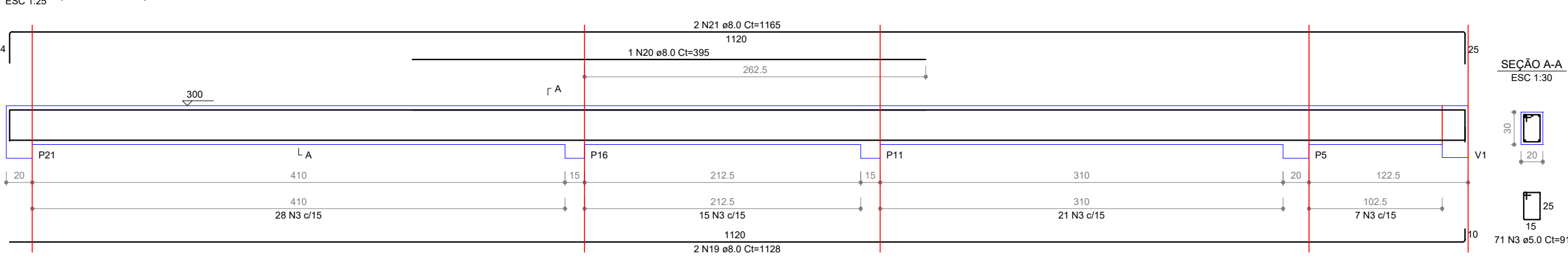
V24 (15 x 30)



V25 (20 x 30)



V26 (20 x 30)



RELAÇÃO DO AÇO					
ACO	N	DIAM (mm)	QUANT	C.UNIT (cm)	C.TOTAL (cm)
CA80	1	8.0	330	111	36630
	2	5.0	346	81	28026
CA50	3	5.0	100	91	9100
	4	8.0	2	796	1592
	5	8.0	2	871	1742
	6	8.0	2	854	1708
	7	8.0	2	341	682
	8	8.0	2	350	692
	9	8.0	2	336	672
	10	8.0	2	668	1336
	11	8.0	3	353	1059
	12	8.0	3	781	2343
	13	8.0	3	208	624
	14	8.0	3	1108	3324
	15	8.0	3	822	2466
	16	8.0	3	668	2004
	17	8.0	2	463	926
	18	8.0	2	508	1016
	19	8.0	2	1128	2256
	20	8.0	1	395	395
	21	8.0	2	1165	2330
	22	10.0	2	833	1666
	23	10.0	2	483	966
	24	10.0	1	300	300
	25	10.0	2	1198	2396
	26	10.0	2	316	632
	27	10.0	2	795	1590
	28	10.0	2	840	1680
	29	10.0	2	330	660
	30	10.0	2	1113	2226
	31	10.0	2	668	1336
	32	10.0	2	1200	2400
	33	10.0	2	1198	2396
	34	10.0	2	862	1724
	35	10.0	2	440	880
	36	10.0	1	213	213
	37	10.0	2	494	988
	38	10.0	1	182	182
	39	10.0	2	702	1404
	40	12.5	2	815	1630
	41	12.5	2	885	1770
	42	12.5	2	585	1170
	43	12.5	2	540	1080
	44	12.5	1	830	830
	45	12.5	2	1107	2214
	46	12.5	2	406	812

RESUMO DO AÇO			
ACO	DIAM (mm)	C.TOTAL (m)	PESO + 10% (kg)
CA80	8.0	269.1	132.5
CA50	10.0	241.9	164.1
CA80	12.5	88.1	93.4
CA80	5.0	737.6	125.1
PESO TOTAL (kg)			
CA80	382.9		
CA50	125.1		
Volume de concreto (C-30) = 6.03 m³			
Área de forma = 111.28 m²			



OBRA

CONSTRUÇÃO DO BERÇÁRIO E.M.E.I AMOR E CARINHO

LOCAL

Rua José Zanette, Cotiporã/RS

PROJETO ARQUITETÔNICO

Eng. Civil Camila Caccia
Eng. Civil Cristiano Fugali

CREA/RS 190280

CREA/RS 236549

PROPRIETÁRIO

PREFEITURA MUNICIPAL DE COTIPORÃ | CNPJ: 90.898.487/0001-64

EXECUÇÃO

COLABORAÇÃO

Jordana Bergamin Regia

ASSUNTO

PROJETO ESTRUTURAL: VIGAS_05

PROTOCOLADO EM:

APROVADO EM:

VERBAO

DATA

10/07/2021

ESCALA

PRANCHA

16/16